



**HOT•N•COLD™**

MULTI-ZONE TEMPERATURE  
DATA MONITORING SYSTEM

## **Alarm Panel Manual**

600 E. Plainfield Rd.,  
Countryside, IL 60525  
Phone: (708) 579-3700  
Fax: (708) 579-1057

Website: [www.hollymatic.com](http://www.hollymatic.com)  
Email: [hollyinfor@hollymatic.com](mailto:hollyinfor@hollymatic.com)

Copyright © 2003-2005 DDB Data Systems Inc.



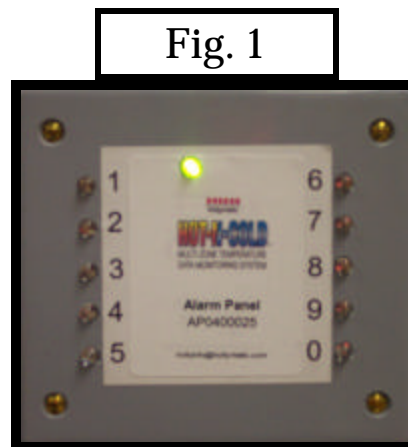
## **Table of Contents**

Introduction	3
Alarm Panel Installation	4
Migration to C3 Data Logger System	6
Testing the Alarm Panel Unit	7
USB Cable Installation	8
Notice, License and Warranty	9

## Introduction

One of the benefits of the **Hot-N-COLD Multi-Zone Temperature Data Monitoring System** is that it can provide a visible alarm notification. You must purchase the option **Alarm Panel** for this procedure to function. Alarm panels are available in 5 zone and 10 zone models.

Install the Alarm Panel on in clearly visible area (Fig. 1) where it will be noticeable by your staff. If necessary you can run a conduit from the Alarm Panel up to the drop ceiling so all the cables are hidden.



Once the box is securely mounted you need to connect it to the same Cat 5 cable line as all the other sensors. Starting from the closest Sensor Box or the Computer Interface Box, run a separate Category 5 cable to the Alarm Panel Box.

If your alarm panel came with a 3.5" diskette included, then you will need that diskette during the installation process. The diskette contains the linking information used between the **Hot-N-COLD Multi-Zone Temperature Data Monitoring System** and the Alarm Panel.

After all the installations have been completed, the **Hot-N-COLD Multi-Zone Temperature Data Monitoring** program is running and an Alarm has been activated, the computer will light up the corresponding LED on the Alarm Panel. This indicates that Zone has a temperature out of range, and appropriate measures must be taken.

## Alarm Panel Installation

To begin the installation select the Computer Interface or the closest Temperature Sensor box, run a single Cat 5 cable from this box to the Alarm Panel.

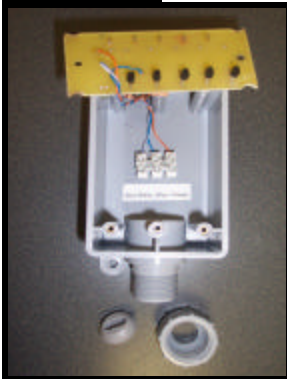
### **Computer Interface/Temperature Sensor Box Cable Installation:**

- 1) Remove the cover plate from the box and you will see the Alarm circuit (Fig. 2). Remove the screws retaining the circuit board to reveal the terminal block.

Fig. 2

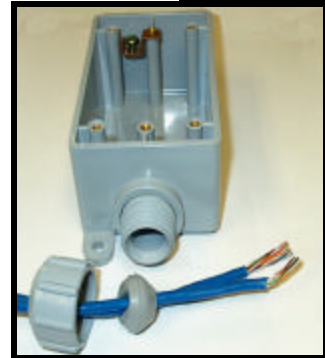


Fig. 3



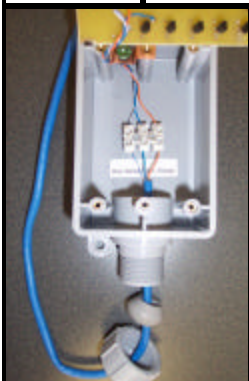
- 2) Loosen the plastic nut and rubber compression fitting on the box (Fig. 3).

Fig. 4



- 3) Cut the cable as shown in (Fig. 4). Remove the outer covering back 1" from the end of the cable. Cut off all the exposed wires except the Blue, Blue-White and Orange.

Fig. 5



- 4) Pass the wires through the plastic nut into the box leaving the compression nut loose at this time (Fig. 5).

- 5) Bare about ¼ inch of insulation on each of the Blue, Blue-White & Orange wires, from each cable (Fig. 6).

Fig. 6



Fig. 7

6) Loosen the screws on the terminal block the ones with no wires on them already). Match the colors and connect the wires to the terminal block. (Fig. 7).

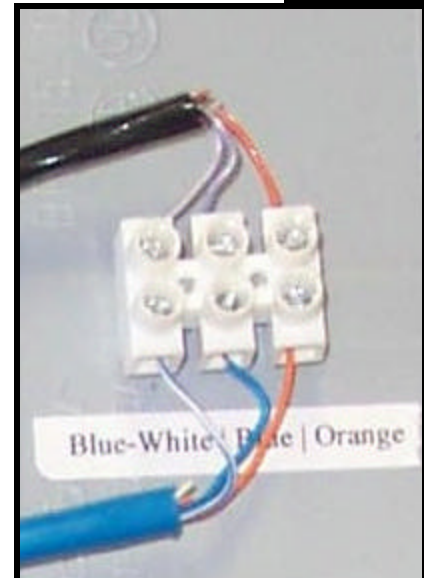
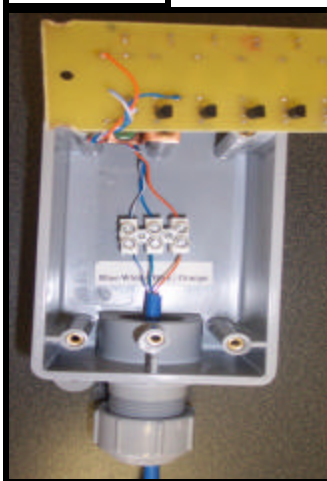


Fig. 8



7) Tighten the plastic nut which will compress the rubber fitting and hold the cable securely (Fig. 8).

Fig. 9

8) Re-attach the cover plate to the box, Repeat these steps with all the Temperature Sensors in all the zones (Fig. 9).



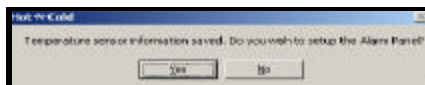
## Migration to Hot-N-Cold Data Monitoring System



When you **Retrieving Sensor Information** (page 16 of the **Hot-N-Cold Multi-Zone Temperature Data Monitoring Manual**), the computer will go out and find all the sensors that you have installed on the system when you click on the READ button. Once this has been completed, you can assign all temperature sensors to zones and give those zones a unique description. Whatever information is entered here is what will appear on the “Main Monitoring Screen” and all reports. Once the zone and zone description information is entered, click on the save button.

Zone	Name	Serial #
1	Walk in Freezer	95009800543E C10
2	Retail Counter	8800980029CC CD10
3	Retail Freezer	9E009800541 F5B10
4	R.T.E. Cooler	0200980054164210
5	Sandwich Counter	9E009800595D D110

After the computer has written the information to the database, it will display the following prompt:



If you have purchased the **Alarm Panel** and completed the hardware installation then you click on the **Yes** button. A box will appear on the screen displaying serial numbers of all the Alarm lights. Using the **Alarm Panel Spec. Sheet** provided you must match up each zone with the correct Light #. This will link a zone or zones to a particular Light so that the computer knows which light to activate when an alarm occurs. Once completed, you can test the system to verify that the lights on the **Alarm Panel** identify the correct Zone when active. This procedure will go through all the zones one by one and activate its corresponding light. This is to double check that the assignments are correct.

Zone	Alarm Serial #
1	B0000000211DAD05
2	BD000000212B9605
3	F10000001FADF105

## Testing the Alarm Panel Unit



In order for the computer to know at what point to sound an alarm and whether to record the temperature of a zone, the user must set these parameters in the **Temperature Zone Configuration Module**. All information that was entered in the Sensor Installation will be presented as below. The user can then set the High/Low Alarm points and the recording option.

The user has the ability of turning off any of the functions by removing the check mark in any of the corresponding boxes. The user can periodically check to determine if the Alarm Panel is functioning correctly. Click on the **Panel** Icon at the top of the screen, which will display all the current sensor and zone identifications.

Zone	Name	Serial #	Alarm	Low	High	Delay (Min)	Record	Calibrate	Alarm Led #
1	Walk in Freezer	9A0008005549EC10	<input checked="" type="checkbox"/>	-5	-1	0	<input checked="" type="checkbox"/>	-0.20	1
2	Retail Counter	B800080029CCCD10	<input checked="" type="checkbox"/>	0	7	0	<input checked="" type="checkbox"/>	0.00	2
3	Retail Freezer		<input checked="" type="checkbox"/>				<input checked="" type="checkbox"/>	0.00	3
4	R.T.E. Cooler		<input checked="" type="checkbox"/>				<input checked="" type="checkbox"/>	0.20	4
5	Sandwich Counter		<input checked="" type="checkbox"/>				<input checked="" type="checkbox"/>	0.00	5

Zone	Alarm Serial #
1	9A0008005549EC10
2	B800080029CCCD10
3	9E000800541F5810
4	0200080054184210
5	5E000800555DD110

You can have the computer run through all the lights by clicking on the **Test** button or you can light one at a time by double clicking on the desired zone.

As each zone lights up, its background will be highlighted in red as you can see from the image above.



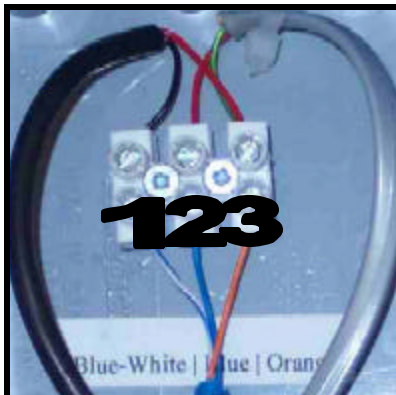
## USB Cable Installation

Below are detail instructions on how to install (replace) a USB Cable into the Computer Interface Box. This cable is required to supply power to the system.

Cut the cable as shown below. Remove the outer covering back 1" from the end of the cable. Cut off all the exposed wires except the Red & Black.



This cable will come pre installed on the Computer Interface box. If you must remove or replace it please ensure that it is wired correctly. Damage to your computer may occur if wired incorrectly!



<b>Black USB Cable</b>		<b>Terminal Block</b>
Black Wire	=====>	Pin #1 (Blue-White)
Red Wire	=====>	Pin #3 (Orange)

Once completed, the finish product should look the same or close to the one above. The other end of the USB Cable should then be connected to an available USB Port on the PC. If one is not available, you can purchase an add on USB card from your local computer store.



#### NOTICE:

Hollymatic Corporation licenses the accompanying software to you only upon the condition that you accept all of the terms contained in this license agreement. Please read the terms carefully before continuing the installation, as pressing the "Yes" button will indicate your assent to them. If you do not agree to these terms, please press the "No" button to exit install, as Hollymatic Corporation is unwilling to license the software to you, in which event you should return the full product with proof of purchase to the dealer from whom it was acquired within sixty days of purchase, and your money will be refunded.

#### LICENSE AND WARRANTY:

The software which accompanies this license (the "Software") is the property of Hollymatic Corporation or its licensors and is protected by copyright law. While Hollymatic Corporation continues to own the Software, you will have certain rights to use the Software after your acceptance of this license. Except as may be modified by a license addendum which accompanies this license, your rights and obligations with respect to the use of this Software are as follows:

#### YOU MAY:

- (i) use only one copy of the Software on a single computer;
- (ii) make one copy of the Software for archival purposes, or copy the software onto the hard disk of your computer and retain the original for archival purposes;
- (iii) use the Software on a network, provided that you have a licensed copy of the Software for each computer that can access the Software over that network;
- (iv) after written notice to Hollymatic Corporation, transfer the Software on a permanent basis to another person or entity, provided that you retain no copies of the Software and the transferee agrees to the terms of this agreement; and
- (v) if a single person uses the computer on which the Software is installed at least 80% of the time, then after returning the completed product registration card which accompanies the Software, that person may also use the Software on a single home computer.

#### YOU MAY NOT:

- (i) copy the documentation which accompanies the Software;
- (ii) sublicense, rent or lease any portion of the Software;
- (iii) reverse engineer, decompile, disassemble, modify, translate, make any attempt to discover the source code of the Software, or create derivative works from the Software; or
- (iv) use a previous version or copy of the Software after you have received a disk replacement set or an upgraded version as a replacement of the prior version, unless you donate a previous version of an upgraded version to a charity of your choice, and such charity agrees in writing that it will be the sole end user of the product, and that it will abide by the terms of this agreement. Unless you so donate a previous version of an upgraded version, upon upgrading the Software, all copies of the prior version must be destroyed.

#### LIMITED WARRANTY:

Hollymatic Corporation warrants that the media on which the Software is distributed will be free from defects for a period of sixty (60) days from the date of delivery of the Software to you. Your sole remedy in the event of a breach of this warranty will be that Hollymatic Corporation will, at its option, replace any defective media returned to Hollymatic Corporation within the warranty period or refund the money you paid for the Software. Hollymatic Corporation does not warrant that the Software will meet your requirements or that operation of the Software will be uninterrupted or that the Software will be error-free.

The above warranty is exclusive and in lieu of all other warranties, whether express or implied, including the implied warranties of merchantability, fitness for a particular purpose and non-infringement. This warranty gives you specific legal rights. You may have other rights, which vary from state to state.

#### DISCLAIMER OF DAMAGES:

Regardless of whether any remedy set forth herein fails of its essential purpose, in no event will Hollymatic Corporation be liable to you for any special, consequential, indirect or similar damages, including any lost profits or lost data arising out of the use or inability to use the software even if Hollymatic Corporation has been advised of the possibility of such damages.

The program was designed to enhance your current temperature data logging system. The Hot-N-Cold Data Monitoring Software which allows for remote alarm notification should not be used as your only source of equipment failure notification. Should the Hot-N-Cold Data Monitoring system fail for any reason, you must return to manually recording temperatures in all your zones until repairs have been completed.

Some states do not allow the limitation or exclusion of liability for incidental or consequential damages so the above limitation or exclusion may not apply to you.

In no case shall Hollymatic Corporation's liability exceed the purchase price for the software. The disclaimers and limitations set forth above will apply regardless of whether you accept the Software.

If you do not understand any part of this disclaimer or manual, you should contact your supplier immediately.

#### GENERAL:

This Agreement will be governed by the laws of the province of Illinois. This Agreement may only be modified by a license addendum which accompanies this license or by a written document which has been signed by both you and Hollymatic Corporation. Should you have any questions concerning this Agreement, or if you desire to contact Hollymatic Corporation for any reason, please write: Hollymatic Corporation, 600 E. Plainfield Rd. Countryside, IL 60525.